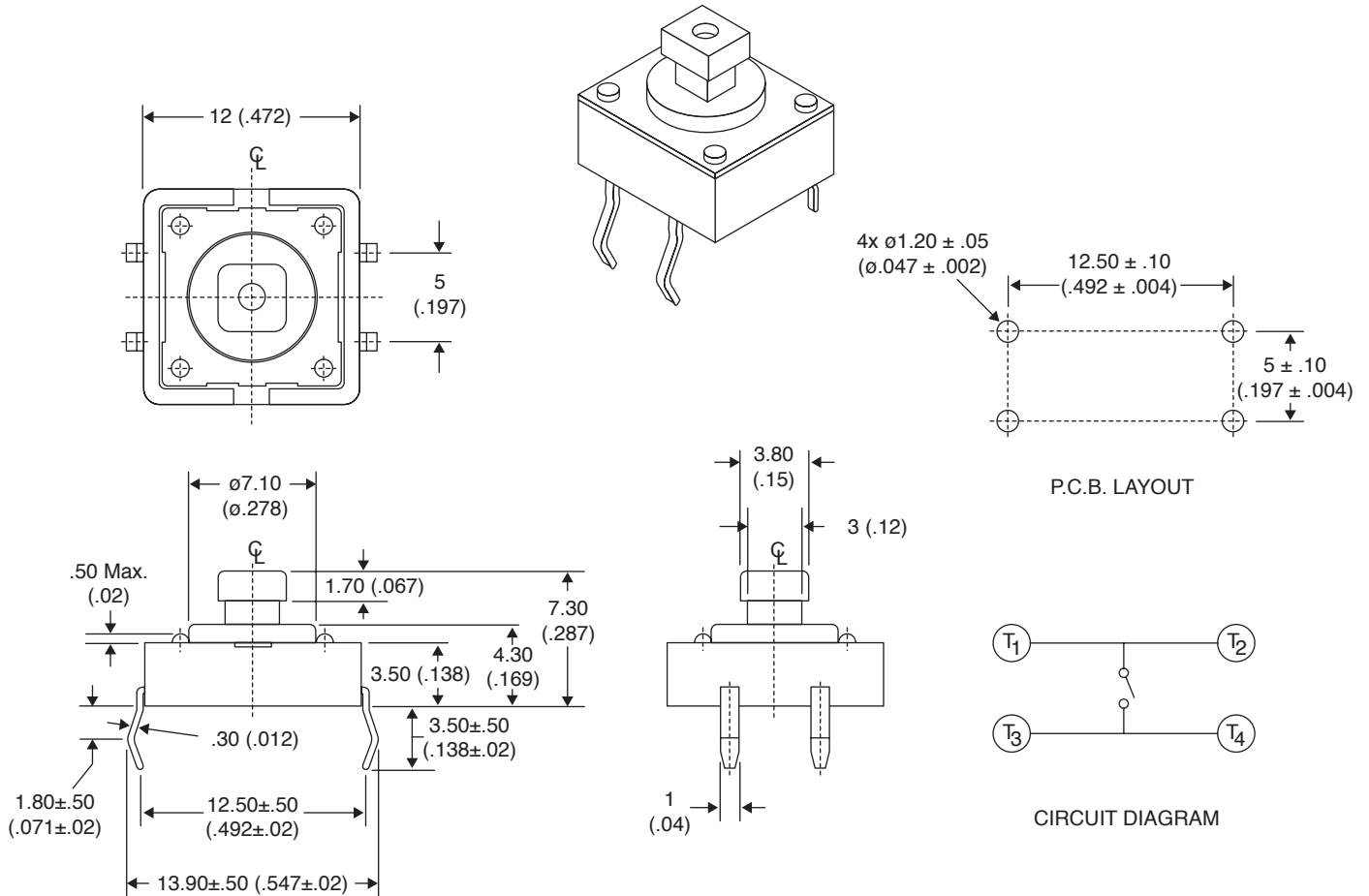


Dimensions: mm (In.)



Electrical Specifications:

- Rating: 50mA / 12VDC
- Contact Resistance: 100mΩ Max.
- Insulation Resistance: 100MΩ Min.
- Dielectric Strength: 250VAC for 1 Minute

Mechanical Specifications:

- Operating Life: 50,000 Cycles
- Operating Temperature: -25°C to +70°C

Note:

- RoHS Compliant and Process Compatible with 260° solder

Tactile Switches

101-TS6211T2602AC-EV, 101-TS6211T3202AC-EV

